

Katsuhiko Hibino: Alone on the Bridge → Together on a Boat



Overview

Exhibition Title: Katsuhiko Hibino: Alone on the Bridge → Together on a Boat

Dates: July 19 - October 5, 2025

Open Hours: 10:00-18:00 (last admission 17:30)

Venue: Contemporary Art Gallery, Art Tower Mito

Closed on Mondays (except for July 21, August 11, September 15), July 22, August 12, and September 16

Admission Fee: ¥900 (¥700 for group of more than 20 people)

Free of charge for high school students, seniors over 70, the disabled and one accompanying attendant

→ Student card or other identification with age required.

- "One-year Pass": ¥2,000 for a one-year pass

- "First Friday": special discount for students and seniors

→ Student card holders and seniors 65 to 69 get a discount rate of ¥100 each first Friday (August 1, September 5, October 3)

Organized by Mito Arts Foundation

Funded by a grant from Toshiaki Ogasawara Memorial Foundation

Sponsored by IBARAKI TOYOPET co.,Ltd., TOYOTA COROLLA SHIN-IBARAKI CO., LTD., Netz Toyota Ibaraki

Supported by the Museum of Fine Arts, Gifu, Contemporary Art Museum Kumamoto, Tokyo University of the Arts, Rengo Co., Ltd., Suntory Holdings Ltd.

Curated by Yuu Takehisa (Artistic Director, Contemporary Art Center, Art Tower Mito)

Outline of the Exhibition

Katsuhiko Hibino says that when, as a child, he unexpectedly found himself alone on the bridge, “aloneness” hit home for the first time. He states that he creates art out of a desire to meet “someone,” to communicate. This exhibition traces the evolution of Hibino’s activities, from his upbringing to the present day, as he continually seeks connection, moving from a state of “aloneness” to one of “togetherness.”

In the early 1980s, while enrolled in MA in Design, Graduate School of Fine Arts, Tokyo University of the Arts, Hibino expanded the concept of illustration with his works made from cardboard. He won grand prizes in successive open-call exhibitions, rapidly becoming a celebrated figure of the era. However, when viewing Hibino’s career in a broader perspective, the ‘80s represent just one stage. In the ‘90s, he engaged in introspection, exploring the expression of the intangible. In the 2000s, he made a significant shift toward art projects focused on exploring relationships. Since the 2010s, while taking on roles such as museum director, and from the 2020s, also as a university president, he has vigorously pursued practices that connect art with society by integrating it with fields such as welfare and healthcare, often collaborating with government bodies and corporations. This exhibition considers all these endeavors as the artistic practice of Katsuhiko Hibino, the artist.

This exhibition offers an in-depth look at Hibino, whose dynamic work spans multiple fields. Starting from his formative years as an artist, it explores his journey through the perspectives of those he has engaged with, incorporating anecdotes from picture books and manga produced for this occasion. By focusing on his approach, gestures, behaviors, and attitude, the exhibition seeks to uncover the common thread running through Hibino’s ever-expanding artistic practice, including his post-2000s activities that may not always take tangible, physical form.

Artist’s Biography

Born in Gifu City in 1958. Completed MA in Design, Graduate School of Fine Arts, Tokyo University of the Arts in 1984. The works he constructed of cardboard while in graduate school attracted attention and won the grand prize at the Japan Graphic Exhibition in 1982. Since then, he has exhibited at numerous exhibitions including the Venice Biennale in 1995, also working in various fields such as a stage designer and a producer of an art festival. In recent years, he has conducted many art projects with participants in a local community, which make use of regional characteristics and relationships as well as people’s individuality. Since 2015, he has been supervising the art project “TURN,” which creates expressions from interactions caused by encounters between people beyond differences in a background or a tradition such as disability, generation, gender, and nationality. Since 2017, he has been supervising the human resource development project for “a society where diverse people co-exist,” “Diversity on the Arts Projects – DOOR –,” with the theme of “art x welfare.” He received the Minister of Education, Culture, Sports, Science, and Technology Award in the 2015 Art Encouragement Prize Development of the Arts Field. Currently, he is the president of Tokyo University of the Arts; the director of the Museum of Fine Arts, Gifu; the director of Contemporary Art Museum Kumamoto, and a counselor of Japan Football Association.

▼Related Programs

Artist Talk

Date: July 19, 14:00-15:30

Venue: Workshop room, Contemporary Art Gallery

Capacity: 80 persons (no reservation required, first-come, first-served basis.)

Fee: free (Exhibition ticket required.)

Talk on How to Preserve Katsuhiko Hibino

Date: August 31, 14:00-16:00

Venue: Workshop room, Contemporary Art Gallery

Capacity: 80 persons (no reservation required, first-come, first-served basis.)

Fee: free (Exhibition ticket required.)

Artist's Creation in the Gallery

Katsuhiko Hibino creates a piece of three-dimensional art from a cardboard box in public.

Dates: July 20, 11:00; August 30, 14:00; September 14, 14:00, each approx. 1 hour

Venue: Contemporary Art Gallery

Workshop "on the bridge"

In 2002, Katsuhiko Hibino conducted workshops on the theme of "bridges" in Moriya and Satomi, Ibaraki Prefecture. Works created by participants were then made into one installation, exhibited alongside his own pieces in the "Twelve Japanese Artists from the Venice Biennale 1952–2001" exhibition at Art Tower Mito. This exhibition will feature a reassembly of some of those original works. Additionally, new bridge-themed workshops will be held, and the resulting creations will be added to form a new bridge installation.

Date: July 20, 14:00-16:00

Venue: Workshop room, Contemporary Art Gallery

Participants: elementary school children and older *Children younger than the 3rd grade of elementary school need to be accompanied by an adult.

Capacity: 30 persons (reservation required, first-come-first-served basis.)

Fee: 1,000 yen; 500 yen for high school students and younger (Exhibition ticket is also required.)

Reservation starts at June 25, 10am.

The Day After Tomorrow Morning Glory Project 2025 Mito

This project nurtures local ties through activities such as planting seedlings, painting wooden decks, and harvesting, with the seeds helping to forge connections that extend beyond the local community. Originally brought from Azamihira to Mito in 2005, this project will be held again this year.

Dates: May – November, 2025. The national meeting takes place on September 13.

Venues: 2nd Floor Corridor of Art Tower Mito, Ground Floor of Mito City Civic Center, Ground Floor of Keisei Department Store

Organizers: The Day After Tomorrow Morning Glory Mito Executive Committee, Mito Arts Foundation, MITO KEISEI DEPARTMENT STORE CO., LTD., Mito City Civic Center

HIBINO CUP

Participants in this annual workshop can enjoy both art and sports together. In the morning, each team of participants make their own soccer goal, ball and uniforms using corrugated cardboard and packing materials. In the afternoon, they enjoy playing the original mini-soccer game. Parents, children and friends can enjoy the game together.

Date: October 4, 10:00-16:00

Venue: Plaza, Art Tower Mito

Participants: elementary school children and older

Capacity: 50-70 persons [10 teams] (reservation required, first-come-first-served basis.)

Fee: 500 yen per person

Reservation starts at September 1, 10am.

Organizers: HIBINO CUP Committee, Mito Arts Foundation

Session! Gallery Tour with the Visually-impaired

A gallery tour led by Kenji Shiratori, a blind art connoisseur brings participants together through words. Those who can see describe the artworks and their impressions of them to other participants who are visually impaired, and a dialogue develops out of this exchange.

Dates: August 2, 10:00-12:00 / 14:30-16:30, August 3, 14:30-16:30,

Capacity: five people per session (decided by drawing)

Fee: 1,500 yen including exhibition ticket; 600 yen for people with free admission to an exhibition.

Application is to be submitted from July 1, 10am to July 15, 6pm.

Weekend Gallery Talk

CAC (Contemporary Art Center) gallery volunteer talkers guide visitors to explore the exhibition together.

Dates: Saturdays from August 9 onwards, starting at 14:30, approx. 40min.

Fee: free (exhibition ticket is required.)

Gallery Tour for Parents with Babies

Dates: August 30 and September 3, 10:30-12:00

Participants: pre-school children and their family

Capacity: 5 families per session (reservation required, first-come-first-served basis.)

Fee: 1,500 yen for guardians only (includes admission to the exhibition / general admission fee applicable from second accompanying guardian)

Reservation starts at July 30, 10am.

Supported by Pigeon Manufacturing Ibaraki Corporation

Bridge Cafe

This community café is designed for seniors, individuals living with dementia, their families, and caregivers. It offers opportunities to view the exhibition, engage in crafts, enjoy conversations, and discuss any concerns.

Members of the general public are also welcome to participate.

Date: September 10, 10:00-12:00 / 13:00-15:00

Venue: Workshop room, Contemporary Art Gallery

Supported by Mito City Senior Welfare Section, Welfare Department

For a group visit, a reservation is required.

▼Other Projects during the exhibition period

Summer korabo rabo Fes 2025

Our popular, regularly-held artist workshop is enjoyable for both children and adults.

Dates : August 9 and 10

Fee: one-day pass including exhibition ticket 1,700 yen; 1,000 yen for high school students and younger, free for children at the age of three years old and younger.

Capacity: approx. 80 people per day (reservation required, first-come-first-served basis.)

Reservation starts at July 15, 10am.

NOTES

CONTACT

Contemporary Art Center, Art Tower Mito

1-6-8, Goken-cho, Mito City, Ibaraki, 310-0063, Japan

Tel: +81 (0)29 227 8120 / Fax: +81 (0)29 227 8130 <https://arttowermito.or.jp/>

Regarding the exhibition, contact Yuu Takehisa (Artistic Director, Contemporary Art Center, Art Tower Mito)

Regarding educational programs, contact Junko Moriyama, Yoshihiro Nakagawa (Educational Program Coordinators)

For public relations and publicity of photographs, contact Kaori Torii (PR).

Email: cacpr@arttowermito.or.jp

Information is available on ATM X(twitter) account http://twitter.com/MITOGEI_Gallery

Requests regarding publication of information:

1. Please make sure to use the official title of the exhibition, along with the exhibition dates.
2. When using photographs, please put captions, credits and any other information attached to a photograph adjacent to the photo.
3. The phone number of Art Tower Mito to be published is 029-227-8111 only.
4. Please send Kaori Torii a copy of the VTR, newspaper or magazine for our archives.
5. For interviews with an artist or to photograph the exhibition, please contact Kaori Torii in advance. Requests may not be accepted under some circumstances.

ACCESS

Train:

Take the Limited Express on the Joban Line from Ueno Station (also from Shinagawa and Tokyo Station), Tokyo, and get off at Mito Station. The Express runs every 30 min. The ride takes 65-85 min.

From Mito Station, take a bus from stop no. 4, 5, 6 or 7 at the North Exit bus terminal and get off at "Izumi-cho 1-chome," the fourth stop. Walk toward the direction of the Mito station and cross the street (route #50) on the first crossing. Walk ahead in a narrow lane in parallel to the crossing. It is a 2-min. walk to Art Tower Mito.

For details, please contact East Japan Railway Company (JR). Tel: 029-221-2836 <http://www.jreast.co.jp/>

Highway Bus:

Take a highway bus bound for Mito (via Akatsuka route) from the stop No. 4 at the highway bus terminal located at the

Yaesu South Gate of Tokyo station. The ride takes approx. 100 min. Get off at the "Izumi-cho 1-chome" stop. It is a 2-min. walk to ATM.

For details, contact Ibaraki Kotsu (Transport). Tel: 029-251-2331 <http://www.ibako.co.jp/>

Car:

Get off at Mito IC on Joban Highway, and drive toward the city center on the route #50 for about 20 min. ATM is near the crossing of route #349. Pay parking is available on the basement level of Art Tower Mito. The gate is on the north side of the east end of the ATM building. Free for 30 min., ¥200 for an hour and ¥100 for every additional 30 min.

Open from 7:00 to 23:00. For highway tolls and routes, please refer to E-NEXCO Drive Plaza "DoRaPuRa."

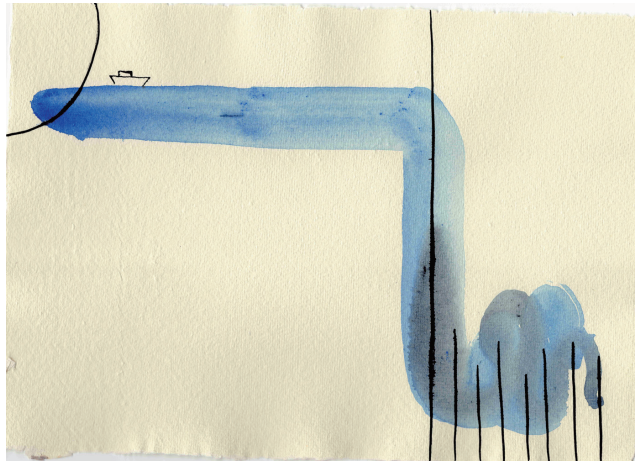
Tel: 0570-024-024 <http://www.driveplaza.com/>

【Press Image Stock】 The images are available for press purpose. Please contact Torii at the office.

1



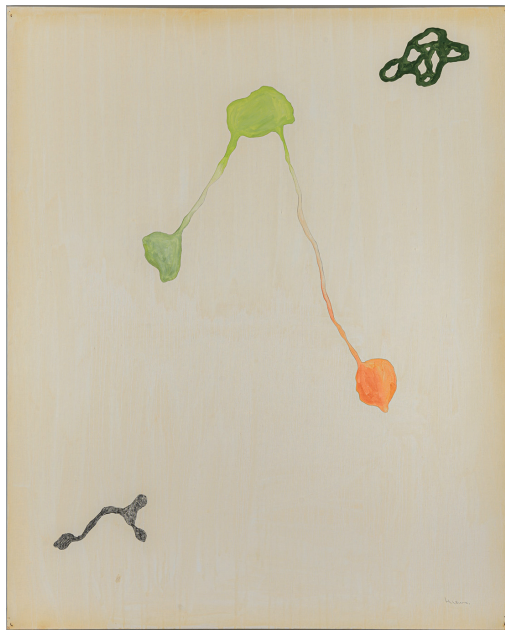
2



3



4



1. BIKE, 1984. Photo: Yuji Takeuchi
2. From "I Am the Echo of the Earth," 2020. Photo courtesy: HIBINO SPECIAL
3. *SEED is a Ship/Asatte-maru*, 2007/2025
4. Ugoki, from "Kieru Jikan," 1993. Photo: Makoto Tomioka

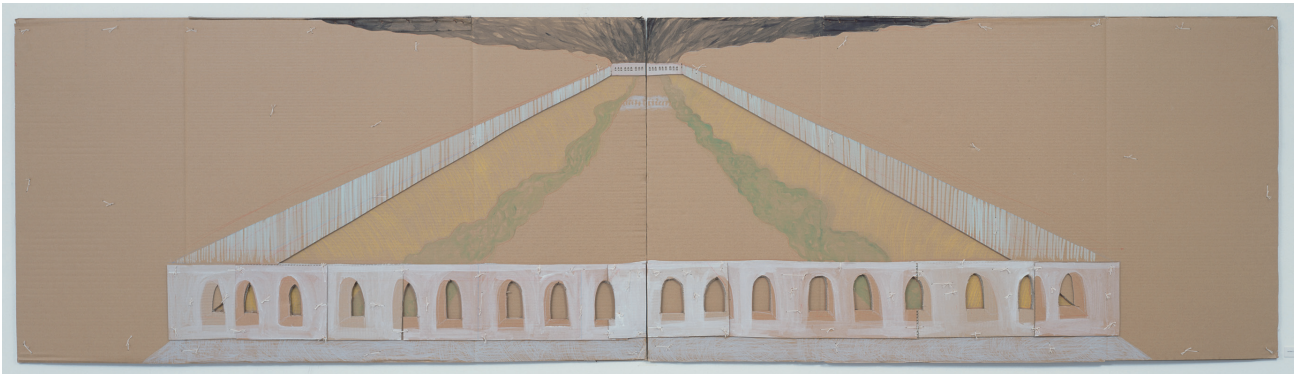
5



6



7



5. "Koyominoyobune," 2006-. View of 2021, Photo: Katsuhiko Hibino
6. Day After Tomorrow Newspaper Cultural Department, 2003-, View of 2003. Photo courtesy: HIBINO SPECIAL
7. Watashi ga hajimete tachidomatta no wa Kayaba no hashi no ue deshita., 2002. Photo Courtesy: HIBINO SPECIAL