

## Shinro Ohtake: BLDG. 1978-2019



### Exhibition Overview

Exhibition Title: Shinro Ohtake: BLDG. 1978-2019

Dates: Saturday, July 13, 2019 - Sunday, October 6, 2019

Closed on Mondays (except July 15, August 12, September 16, September 23, public holidays) and July 16, August 13, September 17, September 24

Open Hours: 9:30 - 18:00 (no admittance after 17:30)

Venue: Contemporary Art Gallery, Art Tower Mito

Admission: ¥900 (¥700 for advance ticket and group of more than 20 people)

Free of charge for High school student, seniors over 70, the disabled and one accompanying attendant

→ Student card or other identification with age required

- One-year Pass: ¥2,000 for a one-year pass

- **First Friday** - special discount for students and senior citizens

→ Student card holders and seniors 65 to 69 get a discount rate of ¥100

each first Friday (August 2, September 6, October 4)

Organized by: Mito Arts Foundation, The Yomiuri Shimbun, The Japan Association of Art Museums

Sponsored by: Lion Corporation, Dai Nippon Printing Co., Ltd., Sompo Japan Nipponkoa Insurance Inc., Nippon Television Network Corporation

Supported by: Suntory Holdings Limited, Take Ninagawa, HeHe

Curated by: Yu Iseki (Curator, Contemporary Art Center, Art Tower Mito)

## Exhibition Overview

Since his debut in the early 1980s, Shinro Ohtake (1955- ) has generated a variety of expressions, mainly painting but also printing, sound, photography, video images, etc. His activities have influenced a wide range of genres, not only the world of contemporary art but also characters and designs.

This exhibition focuses on Ohtake's *BLDG.* series, paintings that he has worked on over 40 years since the 1970s to the present. The works of *BLDG.* are not just depictions of the contemporary scenery. What Ohtake remembers about various cities such as Hong Kong, London and Tokyo; their humidity, heat, noise and smell are randomly mixed, and they make up virtual scenery in the form of buildings.

For this exhibition, we have researched over 800 works from a large number of the unreleased to the latest works, and by publishing all works in the *BLDG.* series and displaying them as much as possible, we unravel the full view of Ohtake's *BLDG.* series.

In the contemporary era of digital technologies, what is the meaning of painting with one's own hands and to continue doing it? We hope that you would feel it through this exhibition.

## Shinro Ohtake's Biography

Born in 1955, Tokyo. Began showing his works inside and outside Japan since the early 1980s. Since his first retrospective *Shinro Ohtake Zen-Kei: Retrospective 1955-2006* (2006) at Museum of Contemporary Art Tokyo, had many solo shows at Tokyo, Kagawa, Seoul, London, Singapore, etc.. Participated in *the 8th Gwangju Biennale* (2010), *dOCUMENTA (13)* (2012), *the 55th Venice Biennale* (2013), *the Yokohama Triennale 2014* (2014), and *the Setouchi Triennales* (2013, 2016).

Well-known public arts are *Shipyards Works* (1990), Art House Project "Haisha" *Dreaming Tongue/ Bokkon-Nozoki* (2006), Naoshima Bath *I♥湯* (2009) at Naoshima, *Mekon* (2013) at Megijima and *Needle factory* (2016) at Teshima, Kagawa. Also Drop curtains *Kita no Sora ni Ukabu Katachi* (1999) at Sapporo, Hokkaido and *Shu-Kei* (2001) at Ikata, Ehime.

Published essays *Mienai Oto, Kikoenai E* (2008), *Bi* (2013) from Shinchosha. Picture book *Uncle Jari* (1994) from Fukuinkan. New release essays *Nanika to Nanika* from Shinchosha on Nov. 2018. Essay *Mienai Oto, Kikoenai E* is now appearing serially in the magazine *Shincho*.

Official homepage: <https://www.ohtakeshinro.com/>

## Highlights of the Exhibition

In the Kanto region, this is Ohtake's solo exhibition in a museum in 13 years since *Shinro Ohtake Zen-kei: Retrospective 1955-2006* held at Museum of Contemporary Art Tokyo in 2006. Shinro Ohtake's works fill the gallery space of Art Tower Mito with an overwhelming number and scale.

More than 500 works from over 800 works of Ohtake's *BLDG.* series produced over 40 years since 1978 to the present are shown here. After the exhibition at Contemporary Art Museum, Kumamoto, several of his new works including large three-dimensional works are added, and the structure of the display and the list of exhibited works are greatly changed.

The *BLDG.* exhibition logo designed by Ohtake, his drawings made for this exhibition, special T-shirts printed with photo collages and the special editions of photoengraved posters of this exhibition are produced. They will be on sale at our museum shop along with Ohtake's book of works, *Shinro Ohtake: BLDG. 1978-2019* (published by HeHe).

---

## RELATED PROGRAMS

---

### ■ Shinro Ohtake Artist Talk

The artist himself will talk about the works of *BLDG.* and his activities in recent years.

Date: Saturday, July 13, 2019 13:30 - 15:00 (Doors open at 13:00)

\*Please note that the ending time of the talk might change.

Venue: Large Conference Hall (6F), Mito Bunka Koryu Plaza

1-2-12 Goken-cho, Mito City (one minute-walk from Art Tower Mito)

Capacity: 200 (first-come-first-served basis, reservation unnecessary)

Fee: Free

### ■ Book Signing

Date/Time: After the artist talk on July 13, there will be about 30-minute book signing session.

Venue: Entrance Hall, Art Tower Mito

\* Autographs are signed only on his publications including *Shinro Ohtake: BLDG. 1978-2019*. The number of books to be signed is limited to one per person. (Autographs are not to be signed on large square cards known as “shikishi” or exhibition flyers.)

Some of his books and *Shinro Ohtake: BLDG. 1978-2019* can be purchased at our museum shop “Contrepoint.”

### ■ Curator Talk

The curator of the exhibition will talk about the exhibition.

Dates/Time: Saturday, July 27, and Saturday, August 24, 2019 14:00 - 15:00

Venue: Contemporary Art Gallery, Art Tower Mito

Fee: Free (included in the admission, reservation unnecessary)

\* Meet at the entrance of the Contemporary Art Gallery.

---

## EDUCATIONAL PROGRAMS

---

### ■ Weekend Gallery Talk

CAC (Contemporary Art Center) gallery volunteer talkers guide visitors to explore the exhibition together.

Dates: Saturdays and Sundays between July 28, 2019 and October 6, 2019

Starts at 14:30 (Gallery talk lasts approximately 40 minutes.)

Fee: Free (included in the admission of the exhibition, reservation unnecessary)

Venue: Contemporary Art Gallery, Art Tower Mito

\* No talk is held on August 10 (Sat.), 24 (Sat.), September 14 (Sat.), and 15 (Sun.). A gallery talk might be canceled due to circumstances.

### ■ Natsu no korabo rabo

Our “Kodomo korabo rabo” held every summer is renewed and designed for all generations. In three seasons of summer, autumn and winter, workshops and exhibition programs will be held. The theme for this summer is “picture books.” There will be workshops and a secondhand book fair.

Stories are written by Mineko Ohtani (storywriter), talk on book-making and workshops are by Tamon Yahagi (painter, book designer), and a secondhand book fair is held by Li:ttle (from Kofu city), etc.

Dates: Friday, August 9, and Saturday, August 10, 2019

Venue: Workshop room, Contemporary Art Gallery, Art Tower Mito, etc.

Application acceptance period: July 15 (Mon.) - 19 (Fri.)

\* The target audience and participation fee depend on each program.

\* In case of too many applications, we will hold a drawing.

\* For more information on application procedures and program, please view our flyers or visit our website.

\* Aki no korabo rabo will be held on September 14 (Saturday) and 15 (Sunday).

### ■ Session! - Gallery Tour with the visually impaired

This tour, which is guided by SHIRATORI Kenji, who is blind, has been held since 2010. Formed into a pair or group of a mixture of blind or partially sighted individuals and people of normal vision, participants are invited to experience the exhibition by sharing thoughts and impression through a conversation.

Dates: Saturday, September 14, Sunday, September 15, 2019 14:00 - 16:00

Capacity: 10 (reservation required, first-come-first-served basis)

Fee: ¥1,000 (includes the admission of the exhibition)

\* For reservation, call Contemporary Art Center at +81(0)29 227 8120.

\* Visually impaired participants are requested to let us know when making reservations.

---

### OTHER PROJECTS during the exhibition period

---

#### ■ CRITERIUM 96 Hanako Murakami

Criterion is an exhibition series formed jointly by young artists and Art Tower Mito curators. Its 96th exhibition will introduce the artist Hanako Murakami who is interested in classical techniques of photography and the origin of mechanical reproduction technology such as letterpress printing. Murakami’s previous works, such as the work inspired by the early 20<sup>th</sup> century photographic techniques titled *ANTICAMERA (OF THE EYE) #P* (2016) unravels the structure of “seeing,” inseparable from the technology through in-depth research and presents its possibility seen from the contemporary viewpoint. This exhibition will focus on her recent works based on her research on the early photography conducted at Getty Research Institute and George Eastman Museum (both in the U.S.) in 2018.

Dates: Saturday, July 13, 2019 - Sunday, October 6, 2019

Venue: Gallery 9, Contemporary Art Gallery, Art Tower Mito



Untitled(ROC18.9.27, I/S) 2018  
Courtesy of Taka Ishii Gallery

Organized by: Mito Arts Foundation

Curated by: Oko Goto (Curator, Contemporary Art Center, Art Tower Mito)

\*Criterium comes from the Latin "criterion," which means a standard. Every exhibition is formed jointly by the artist and the curator.

\* Entrance fee for Criterium is included in the admission of the exhibition.

### ■ Katsuhiko Hibino "HIBINO CUP"

Participants in this annual workshop can enjoy both art and sports together. In the morning, each team of participants makes soccer goals, ball and uniforms using corrugated cardboard and packing materials. In the afternoon, they enjoy playing the original mini-soccer game. Parents, children and friends can enjoy the game together.

Date: Saturday, July 27, 2019 10:00-17:00 \*The program may be modified to accommodate inclement weather.

Venue: Plaza, Art Tower Mito

Participants: Elementary school children and older

Fee: ¥500 per person, ¥2,000 for a group of 5 to 7 persons

\* Individual participants will be organized into teams.

\* For groups larger than eight, an additional ¥200 per person will be charged.

Application: Please send an email to [atmcac@arttowermito.or.jp](mailto:atmcac@arttowermito.or.jp) with title "HIBINO CUP", and let us know

1) Team name, 2) Number of players, and 3) Representative telephone number.

\*Application accepted from June 1 (Sat.)

Organized by: HIBINO CUP Committee, Mito Arts Foundation

Special Support from: Mito21 no kai

Supported by: Rengo Co., Ltd., Suntory Holdings Limited, FC Mito HollyHock, IBARAKI ROBOTS SPORTSENTERTAINMENT Co., Ltd., Junior Chamber International Mito, Mito Young Entrepreneurs Group

## NOTES

### Contact:

Contemporary Art Center, Art Tower Mito

1-6-8, Goken-cho, Mito City, Ibaraki, 310-0063, Japan

Tel: +81 (0)29 227 8120 / Fax: +81 (0)29 227 8130 <https://www.arttowermito.or.jp/>

Regarding the exhibition, contact Yu Iseki(Curator).

Regarding educational programs, contact Junko Moriyama, Maiko Sato (Educational program coordinators)

For public relations and publicity of photographs, contact Kaori Torii (PR).

Email: [cacpr@arttowermito.or.jp](mailto:cacpr@arttowermito.or.jp)

Information is available on ATM twitter account [http://twitter.com/MITOGEI\\_Gallery](http://twitter.com/MITOGEI_Gallery)

Requests regarding publication of information:

1. Please make sure to use the official title of the exhibition, along with the exhibition dates.

2. When using photographs, please put captions, credits and any other information attached to a photograph adjacent to the photo.
3. The phone number of Art Tower Mito to be published is +81 (0)29 227 8111 only.
4. Please send Kaori Torii a copy of the VTR, newspaper or magazine for our archives.
5. For interviews with an artist or to photograph the exhibition, please contact Kaori Torii in advance.  
Requests may not be accepted under some circumstances.

## ACCESS

### Train:

Take the Limited Express on the JR Joban Line from Ueno Station (also from Shinagawa and Tokyo Station) in Tokyo, and get off at Mito Station. The Express runs every 30 min. The ride takes 65-85 min.(¥3,820)

From Mito Station, take a bus for Daiku-machi from the stop no. 4, 5, 6 or 7 at the north exit bus terminal and get off at Izumi-cho 1-chome outside Keisei Department Store, the forth stop. (¥170) It is a 2 min. walk to Art Tower Mito.

\*Mito Station (the north exit) --> Icho-zaka --> Minami-machi Ni-chome --> Minami-machi San-chome --> Izumi-cho I-chome

### Highway Bus (Mito-go):

Take a highway bus bound for Mito (via Akatsuka route or Ibarakidaigaku route) from the highway bus terminal located at the Yaesu south gate of Tokyo JR station. (¥2,080)

The ride takes approx. 100 min. Get off at the Izumi-cho 1-chome stop, opposite Keisei Department Store. It is a 2 min. walk to Art Tower Mito.

### Car:

Get off at Mito IC on Joban Highway, and drive toward the city center on the route 50 for about 20 min. Pay parking is available on the basement level of Art Tower Mito. Gate is at the north side of the main building.

Free for 30 min., ¥200 for an hour and ¥100 for every additional 30 min. Open from 7:00 to 23:00.

**Press Image Stock** The images are available for press purpose. Please contact Torii at the office.

1



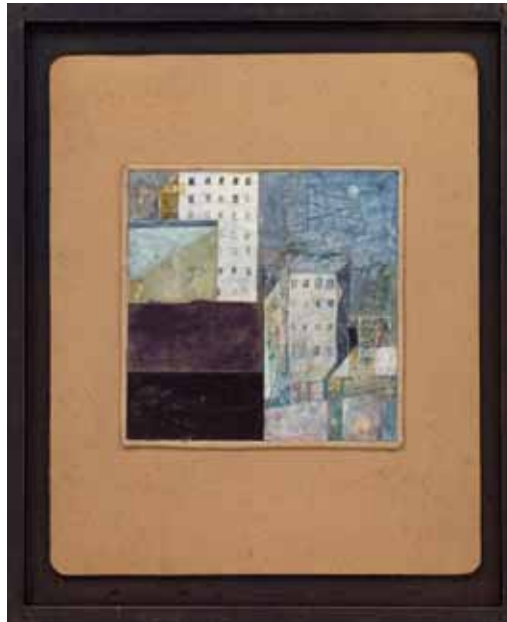
2



3



4



1. *Abandoned Zone*, 2019

2. *Bldg.*, 1984

3. *Building with White Wall 2*, 2017

4. *Tokyo V*, 1984

All of the above © Shinro Ohtake, Courtesy of Take Ninagawa, Tokyo, Photo by Kei Okano